

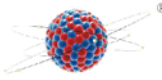
Anti- Laminin β -1 Antibody

NH-SC-33709

Product Type: Recombinant Rat monoclonal IgG1, primary antibodies
Species reactivity: Mouse, Rat, Human
Applications: IF-Tissue Clearing

Description:	Laminins are essential and abundant structural non-collagenous glycoproteins localizing to basement membranes. Basement membranes (cell-associated extracellular matrices (ECMs)) are polymers of laminins with stabilizing type IV collagen networks, nidogen, and several proteoglycans. Basement membranes are found under epithelial layers, around the endothelium of blood vessels, and surrounding muscle, peripheral nerve, and fat cells. Formation of basement membranes influences cell proliferation, phenotype, migration, gene expression, and tissue architecture. Each Laminin is a heterotrimer of α , β , and γ chain subunits that undergoes cell-secretion and incorporation into the ECM. Laminins can self-assemble, bind to other matrix macromolecules, and have unique and shared cell interactions mediated by integrins, dystroglycan, and cognate Laminin receptors. The human Laminin β -1 gene maps to chromosome 7q31.1 and is ubiquitously expressed in tissues that produce basement membranes.
Positive control:	Mouse kidney
Subcellular location:	Intracellular
Recommended Dilutions:	
IF-Tissue Clearing	1:50
Adaptive Clearing kit	Tissue clearing kit (Hydrophilic) (Cat#:NH-CR-210701)
Storage Buffer:	Each vial contains 200 μ g IgG1 in 1.0 ml of PBS with < 0.1% sodium azide and 0.1% gelatin.
Storage Instruction:	Store at 4° C, **DO NOT FREEZE** . Stable for one year from the date of shipment. Non-hazardous. No MSDS required





Images

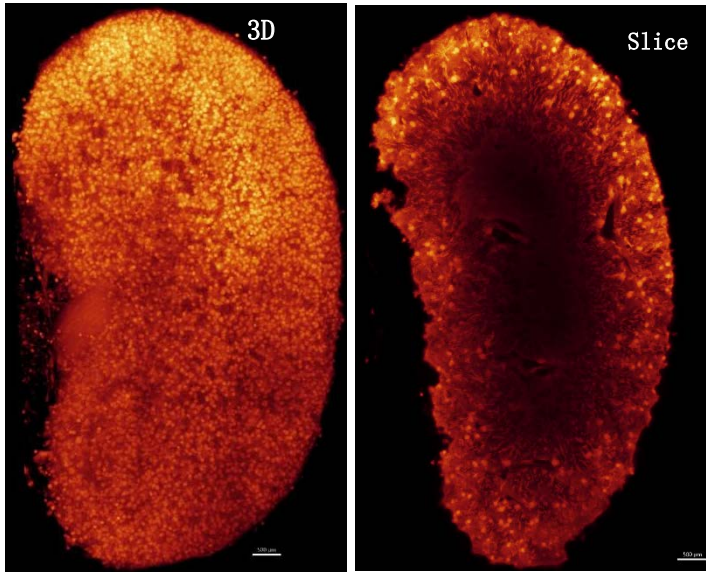


Fig1: Immunofluorescence analysis of fresh mouse kidney tissue labeling Laminin β -1 (NH-SC-33709) at 1/50 dilution.

The kidney of mouse was transparented with Tissue Clearing Kit(Hydrophilic) (Cat#:NH-CR-210701), the tissues were blocked for 4 hours at 4°C, and then probed with antibodies (NH-SC-33709, 1/50) for 4 days at room temperature, after washing with PBST/PBS. Finally, Three dimensional imaging acquisition was performed with Nuohai LS18.

